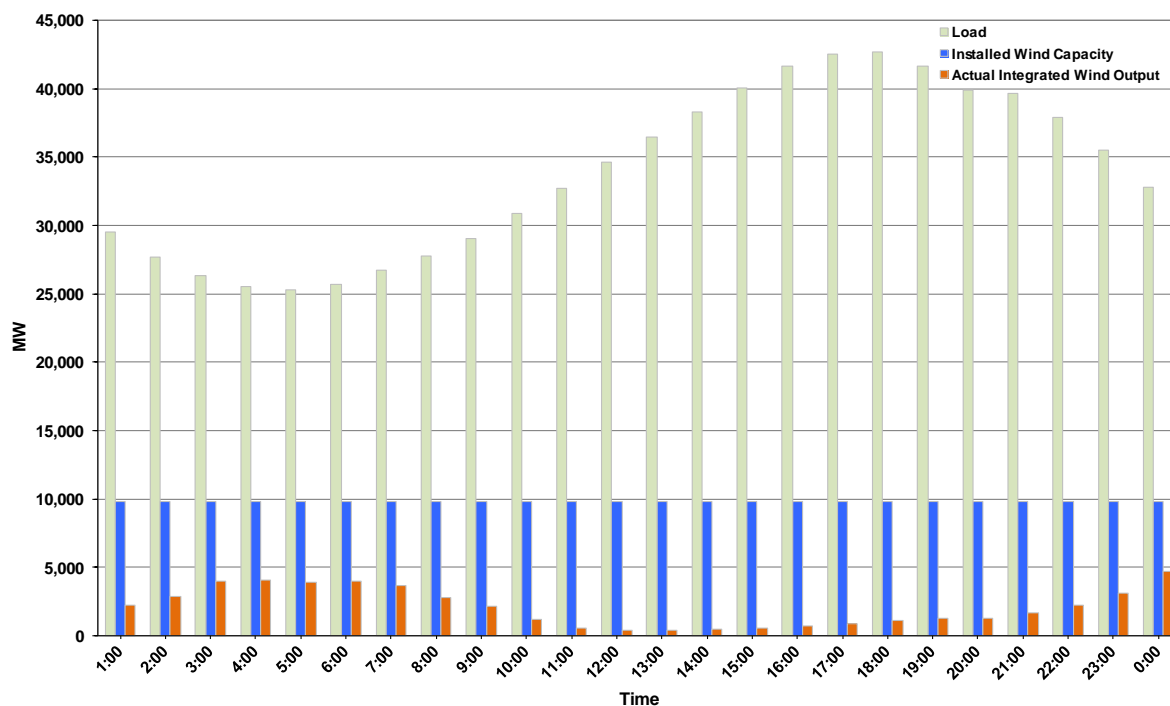




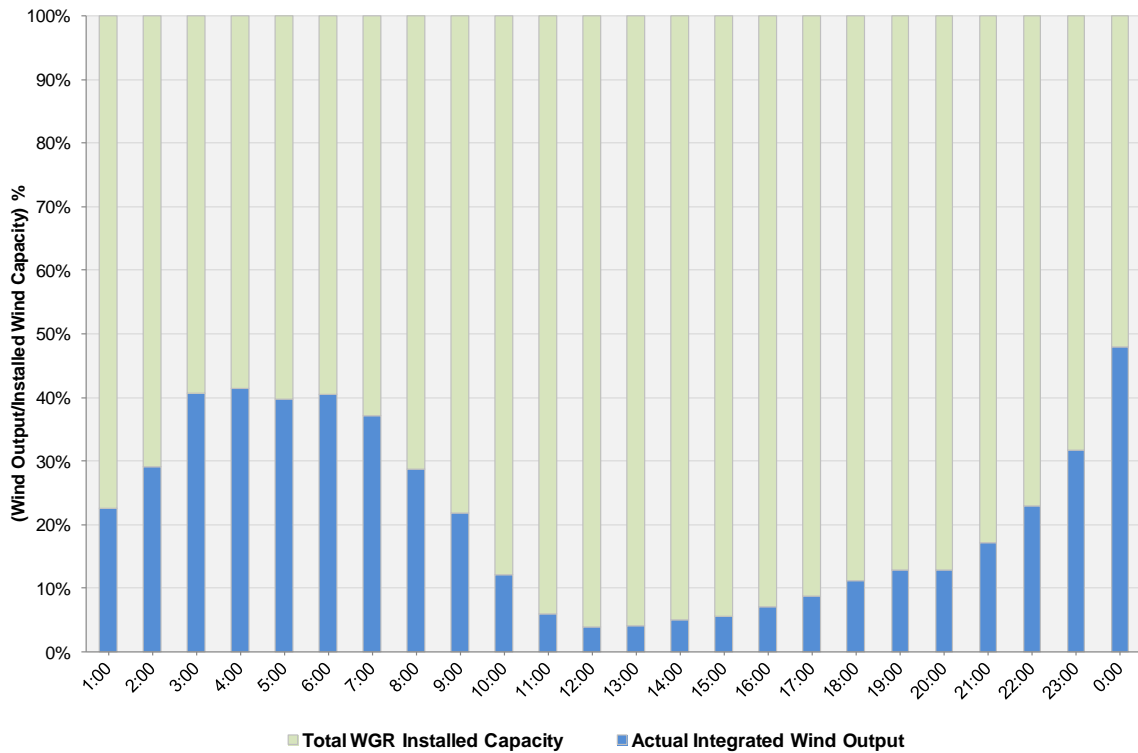
## ERCOT Grid Operations Wind Integration Report: 03/31/12

Peak Load	<b>42,711 MW</b>
Load Peak Hour (HE)	<b>18</b>
Wind over Peak	<b>1,099 MW</b>
Wind Record 03/18/12	<b>7,917 MW</b>
Max Wind Value	<b>5,422 MW</b>
Wind Peak Time	<b>23:59</b>
Wind Integration %	<b>17.16%</b>

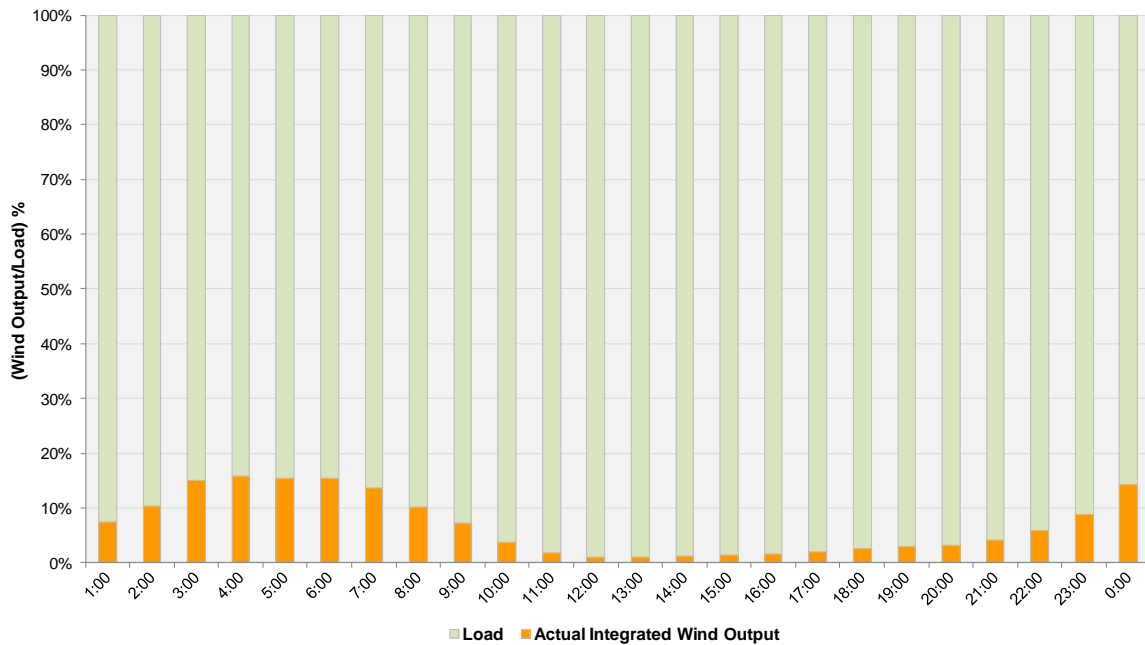
**Hourly Average Actual Load vs. Actual Wind Output  
03-31-2012**



**Actual Wind Output as a Percentage of the Total Installed Wind Capacity  
03-31-2012**



**Actual Wind Output as a Percentage of the ERCOT Load  
03-31-2012**



ERCOT Load vs. Actual Wind Output 3/24/2012 - 3/31/2012

